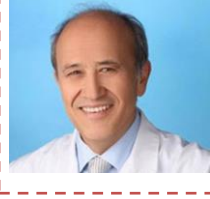


## Mübin Soyman



Prof. Dr.

mubin.soyman@yeditepe.edu.tr

Telefon: +90(216) 363 6044 -  
6344

### Araştırma Konuları

Diş Çürükleri, Floridler, Adeziv Diş Hekimliği, Estetik Diş Hekimliği

### Biyografi

Yüksek Lisans: İstanbul Üniversitesi, Diş Hekimliği Fakültesi, 1973

Doktora: İstanbul Üniversitesi, Diş Hekimliği Fakültesi, 1977

Doçentlik: İstanbul Üniversitesi, Diş Hekimliği Fakültesi, 1982

Profesörlük: İstanbul Üniversitesi, Diş Hekimliği Fakültesi, 1988

### Yayınlar

#### Uluslararası hakemli dergilerde yayınlanan makaleler

1- Koray F, Soyman M, Erdoğan G. Investigation of the etiopathogenesis of amelogenesis imperfecta through microscopic, submicroscopic and cytogenetic methods – a case report. J Oral Rehabilitation, 15:149-162, 1988.

2- Soyman M, Stack MV. Effects of fluoride and/or trace elements on enamel solubility. Proc. Finn. Dent. Soc., 85:167-175, 1989.

3- Ulukapı H, Benderli Y, Soyman M. Determination of fluoride release from light cured glass ionomers and one fluoridated composite rein from the wiewpoint of curing time. J Oral Rehabilitation, 23:2, 1996.

4- Civelek A, Ersoy M, E L'Hotelier, Soyman M, Say EC. Polymerization shrinkage and microleakage in Class II Cavities of various resin composites. Oper Dent 2003; 28(5): 635-641

5- Ersoy M, Civelek A, L' Hotelier E, Say EC, Soyman M. Physical properties of different composites. Dental Materials Journal 2004, 23(3):278-283.

6- Say, EC., Nakajima, M., Senawongse, P., Soyman, M., Özer, F., Tagami, J. "Bonding to Sound vs Caries-Affected Dentin Using Photo-and Dual-Cure Adhesives," Operative Dentistry, 30(1): 90-98 (2005).

7- Say EC, Nakajima M, Senawongse P, Soyman M, Ozer F, Ogata M, Tagami J. Microtensile bond strenght of a filled vs. unfilled adhesive to dentine using self-etch and total-etch technique. Journal of Dentistry 2006;34(4):283-291.

8- Karakaya S, Unlu N, Say EC, Ozer F, Soyman M, Tagami J. Bond strengths of three different dentin adhesive systems to sclerotic dentin. Dent Mater J. 2008 May;27(3):471-9.

9- Gokce K, Aykor A, Ersoy M, Ozel E, Soyman M. Effect of Phosphoric Acid Etching and Self-etching Primer application Methods on Dentinal Shear Bond Strength. J. Adhes. Dent. 2008; 10:345-349

10- Ozel E, Soyman M. Effect Of Fiber Nets, Application Techniques and Flowable Composites on Microleakage and the Effect of Fiber Nets on Polymerizatiom Shrinkage in Class II MOD cavities. Oper. Dent. 2009; 34-5,516-523

11- Yurdagüven H, Tanalp J, Toydemir B, Mohseni K, Soyman M, Bayirli G. The effect of endodontic irrigants on the microtensile bond strength of dentin adhesives. Endod. 2009; Sep;35(9):1259-63.

12- Malkondu Ö, Yurdagüven H, Say EC, Kazazoğlu E, Soyman M. Effect of bleaching on microhardness of esthetic restorative materials. Oper Dent. 2011 Mar-Apr;36(2):177-86. Epub 2011 Jun 24.

### Dersler

DENT 211 Karyoloji ve Koruyucu Diş Hekimliği

DENT 316 Restoratif Diş Hekimliği II

DENT 416 Restoratif Diş Hekimliği III

DEST 521 Adeziv Diş Hekimliği

DEST 581 Estetik Diş Hekimliği I

DEST 582 Estetik Diş Hekimliği II

DOPR 611 Operatif Diş Hekimliği